

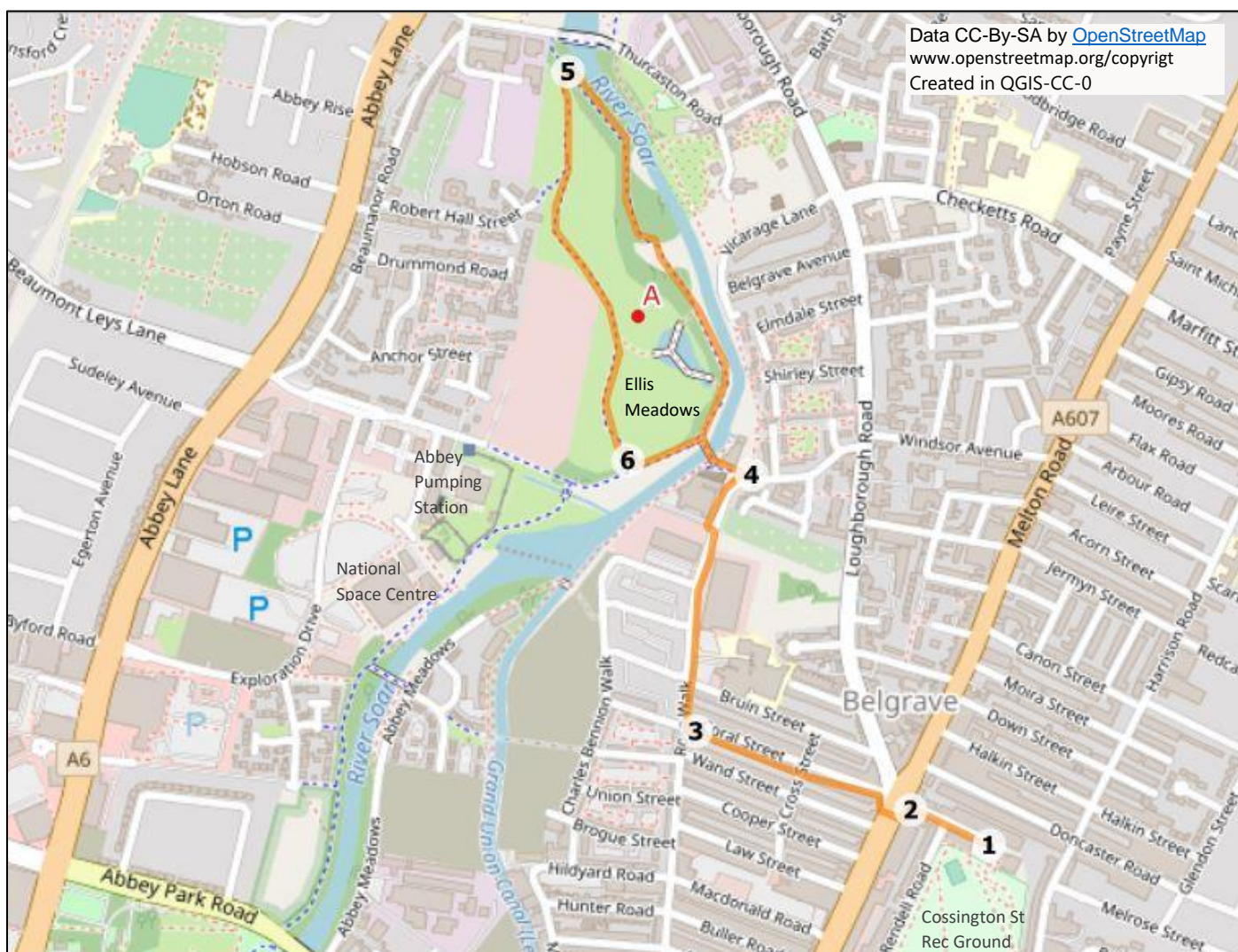
Belgrave Library to Ellis Meadows, Leicester

Start location: Belgrave Library, 24 Cossington Street, Leicester, LE4 6JD

Time taken: 1 hour (steady, pace)* **Distance:** 2 miles 3.2 km **Circular route**
50 minutes (medium pace)

Description:

This route heads to Ellis Meadow via a combination of residential streets and the attractive riverside path. Ellis Meadows was created as part of a flood defence and wildlife project. This lovely green space includes wildflowers in spring and there is a boardwalk over the pond which is a great location to view for wildlife through the seasons.



- Main route
- Alternative route
- 1 Stage / waypoint
- A Point of interest

*Time is calculated at a steady pace of 2mph, if walked without stopping. Allow extra time to look at points of interest and read the information.

This route was developed by staff and volunteers for Leicester City Council:

www.choosehowyoumove.co.uk/walks



Walk starts:

Belgrave Library, 24 Cossington Street, Leicester, LE4 6JD.

Belgrave Library is a short distance from Belgrave Road, which is served by buses. To plan your journey visit: www.choosehowyoumove.co.uk.

Safety tips:

- Take care crossing roads. Use pedestrian crossings where present, especially at the major junctions.
- Watch for cyclists along the riverside paths and in Ellis Meadows, which are popular cycle routes.
- In some places along the route paths are cracked or uneven, so tread carefully. Some pavements may be narrowed due to parked cars.
- Take care in Ellis Meadows on the boardwalk over the pond, which may become slippery after rain.
- Be aware that the riverside path and meadows occasionally flood after very heavy rain. This tends to happen during the winter months, rather than spring and summer.
- Remember to observe the guidance on social distancing.

Route directions:

1. With your back to Belgrave Library, turn left on Cossington Street. Cross over Rendell Road and continue to the main road.
2. Turn left on Belgrave Road to reach the pedestrian crossing. Cross Belgrave Road and turn right. Shortly, turn left into Coral Street. Continue to the end of the road.
3. Turn right on Ross Walk and continue ahead. Pass houses, industrial units and Abbey Primary School. Cross to the opposite side of Ross Walk when safe to do so and continue on Ross Walk as far as the bend, where the road becomes Holden Street.
4. Turn left past the bollards to take the cut through which leads to the 'Holden Street' footbridge, beside TS Tiger Sea Cadets. Cross the river and turn right on the far side, along the riverside path. Watch for cyclists along here, it's a popular cycle route.
5. Before Thurcaston Road, you'll get a view ahead of the old packhorse bridge over the river. Pause at the information board on the left for information about Ellis Meadows. Beside the board, take the path on the left to enter Ellis Meadows (A). Take care - this is also a popular cycle route. You may like to detour from the main path to explore the boardwalks over the pond and spot wildlife.

(A) Ellis Meadows

The Meadows was created as part of a flood defence and wildlife project, carried out by the Environment Agency in partnership with Leicester City Council. It's part of a scheme to reduce the risk of flooding to homes in the city. This area was formerly the grounds of John Ellis School, named after a local farmer and businessman who helped bring the first railways to Leicester in 19th century. Over 600 new trees were planted beside the meadows to create a new woodland and green boundary to the park. Spring and early summer is the best time to see the wildflower meadow, which attracts pollinating insects, bats and insect-eating birds such as swifts and swallows. Within Ellis Meadows is a pond area and wetland habitat, bridged by boardwalks. The wetland area attracts grey heron and little egrets. Environments like this play a really important role in maintaining and improving biodiversity and natural habitats along the river corridor.

6. At the end of the meadow turn left on the riverside path. Continue a short distance then take the ramp up to the footbridge and cross the river. On the far side take the cut-through beside TS Tiger Sea Cadets building to reach the bollards at Holden Street/ Ross Walk. Turn right along Ross Walk and retrace your steps to return to Belgrave Library.

Acknowledgements

Route researched and developed by staff and volunteers for Leicester City Council.